



67, Gardeners Place, Sutton Grange, Shrewsbury, SY2 6FH
£1,395 Per Month



67, Gardeners Place, Sutton Grange, Shrewsbury, SY2 6FH

£1,395 Per Month

VIRTUAL TOUR AVAILABLE: Well maintained three bedroom semi detached house occupying a very quiet cul-de-sac position that includes locked access to the adjacent golf course. The property is just a short distance from a range of amenities and excellent road links including Shrewsbury bypass.

Available: 01/12/25

Description

Comprising: Entrance hall including store cupboard and staircase to first floor, open plan kitchen/dining room including freestanding fridge/freezer*, integrated oven, gas hob, dishwasher and wine cooler, cloakroom including WC, spacious living room with bi-fold doors to landscaped low maintenance rear garden. From the garden there is access to a storage/utility space and private home office. Stairs to first floor landing, large double guest bedroom, family bathroom with shower over bath, further single bedroom, stairs to second floor landing, large master bedroom suite including walk in wardrobe, eaves storage, ensuite shower room. Double glazed windows and gas fired central heating. Driveway providing parking for 3 cars. EPC B



Unfurnished

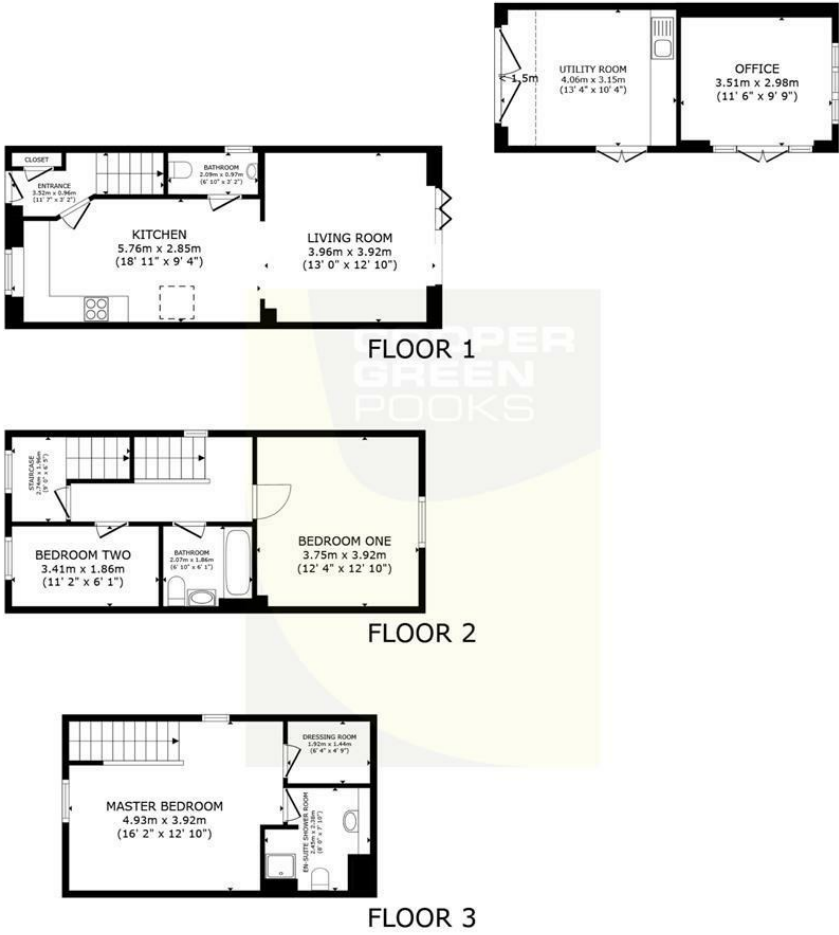
Council Tax Band: C

Available: 1st December 2025

EPC: B



Floor Plans



GROSS INTERNAL AREA
FLOOR 1 59.6 m² (641 sq.ft.) FLOOR 2 37.0 m² (398 sq.ft.) FLOOR 3 27.4 m² (295 sq.ft.)
EXCLUDED AREAS : REDUCED HEADROOM 2.5 m² (27 sq.ft.)
TOTAL : 124.0 m² (1,335 sq.ft.)
SIZES AND DIMENSIONS ARE APPROXIMATE, ACTUAL MAY VARY.

These particulars, whilst believed to be accurate are set out as a general outline only for guidance and do not constitute any part of an offer or contract. Intending purchasers should not rely on them as statements of representation of fact, but must satisfy themselves by inspection or otherwise as to their accuracy. No person in this firms employment has the authority to make or give any representation or warranty in respect of the property.